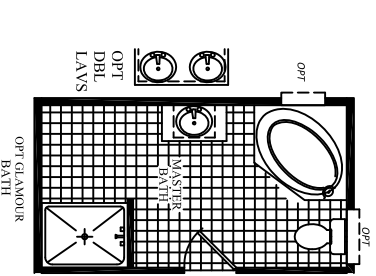
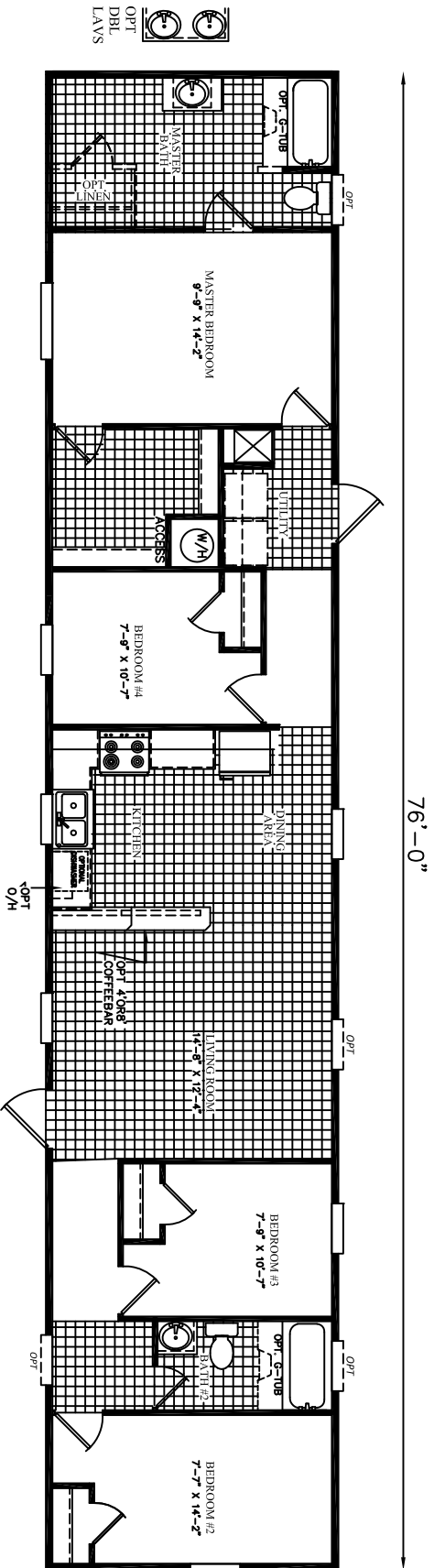


HITCH-END



*UPDRAFT FURNACE
NOT AVAILABLE

DATE: 02/02/2016
VERSION: C
REFERENCE: M211

AREA
TOTAL: 1,127 ft²
LIVING SPACE: 1,127 ft²
PORCH: 0 ft²

UNIT SPECIFICATIONS:
HOME RUN
16' X 80'
4 BEDROOM / 2 BATH

DRAWING/MODEL NUMBER:
1676211HRN

Scotbilt
HOMES, INC.