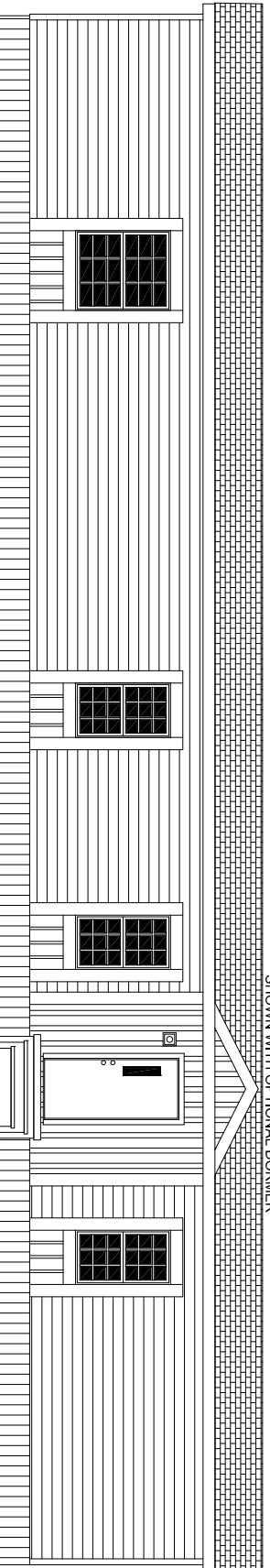
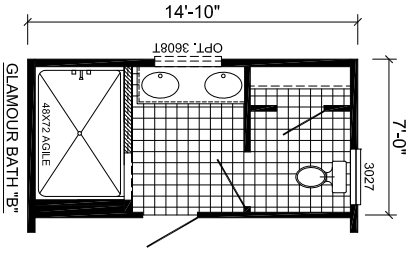
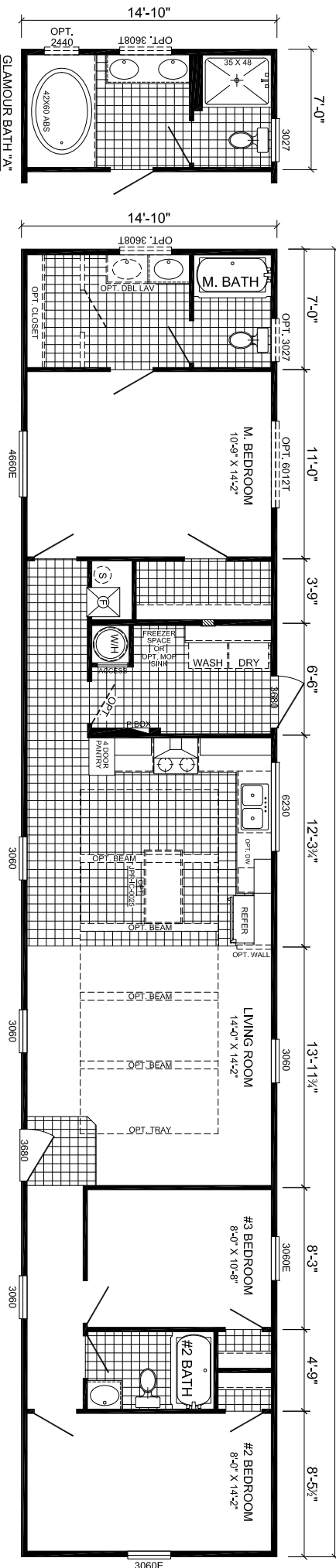


SHOWN WITH OPTIONAL DORMER



NOTE: SHOWN WITH OPT. SINGLE WIDE COUNTRY EXTERIOR - SHUTTERS NOT AVAILABLE

76'-0"



NOTE: * NOT AVAILABLE IN WIND ZONE 3 WITH OPT. 9'-0" WALL HEIGHT.
 * MUST INSTALL R21 CEILING INSULATION WITH THE SELECTION OF OHEAD DUCT OPTION

Scotbilt
 HOMES, INC.

MODEL #: **1676395L GX**

UNIT SPECS: **LEGEND EXPRESS**
 16 X 80 - 3BR 2 BATH

DATE: **12-17-2019**
 VERSION: **B 3-4-2020**

AREA: **1,127 SQ. FT.** TOTAL SQUARE FOOTAGE:
 LIVING AREA: **1,127 SQ. FT.**
 PORCH AREA: **0 SQ. FT.**