

ScotBilt Homes, Inc. High Value Standard Features

EXTERIOR

- **4/12 Roof Pitch (28' wides only)
- ** Vinyl Lap siding
- **Fomecor exterior wall sheathing
- **6x13 covered porch (specific models)
- **8x13 covered porch 2 sides (specific models)
with heavy duty composite flooring & vinyl railing
- 20 Year hand-nailed shingles
- 9 over 9 white windows
- Special strip shutters on front end only
- 6-panel front door w/storm
- 9-pane cottage rear door
- (2) deadbolt locks
- Exterior GFI recep
- Exterior water faucet
- Removable hitches
- Recessed Frame Headers - F & R
- Full size I-beam steel frame
- Porch light at all exterior doors
- Dry-ply shingle underlayment

GENERAL CONSTRUCTION

- **Zone II Construction
- **2x6 exterior wall studs 16" o.c.
- **8' tall 2x4 interior wall studs
- **Tongue & groove plywood floors
- **Total electric/200 amp service
- **R11-13-21 insulation
- **Ridge vent ventilation system
- 2x6 floor joists 16" o.c.
- Truss-type roof rafters
- Copper wiring throughout
- Brace for fans in L/R & BR's
- Smoke detectors-living area & BR's

INTERIOR FEATURES

- **Hand laid 12x12 block floor tiles
(25 year manufacturer's warranty)
- **Drywall wall panels - *no batten strips*
- **4" crown molding - all rooms except closet & pantry
- **Fluted door casing on both sides of all interior doors
except closets & pantry on entry door side only
- **4" baseboard molding T/O
- **Marble window sills
- Custom made drapery package
- 2" wide colonial window blinds
- Plush nylon carpet
- Rebond carpet pad
- Tack strip carpet installation
- Embossed white interior doors
- Brushed nickel lever door handles
- Brushed nickel H/D door hinges
- Brushed nickel light fixtures
- Brushed nickel chandelier - D/R
- Finished walk-in closets
- Coated wire closet shelving
- Metal faucets throughout

Ceiling light w/ switch in master bedroom closet
8' Flat knock down ceilings

KITCHEN FEATURES

- **18' refrigerator w/icemaker
- **Picture window over sink
- Electric range w/ clock/timer & self-cleaning oven
- S/L faucet and spray
- Deep acrylic sink
- Fluorescent light

CABINETS

- **3-tier cabinet system
- **Wood cabinet doors, cherry cabinet doors or white
raised panel
- Hidden cabinet hinges
- Drawers over base cab doors
- Metal drawers w/side roller guides
- Glass cabinet doors (top tier)
- Large pantry with door - (specific model)
- White-lined cabinet interiors
- Center shelves top & base
- Formica countertops
- Ceramic backsplash and self-edge

MASTER BATH - 286653-ORL

- **Fiberglass corner oval tub & shower stall
- **46x46 block glass window over tub
- His/hers countertop w/makeup table
- Ceramic lavs with white cabinets
- Beveled edge mirrors
- "Hollywood" vanity lights
- Elongated ceramic commode

MASTER BATH - (Other Models)

- **54" fiberglass tub/shower or
48" 1pc shower stall with glass doors
- Ceramic lav with white cabinets
- Beveled edge mirrors
- "Hollywood" vanity lights
- Elongated ceramic commode

GUEST BATH

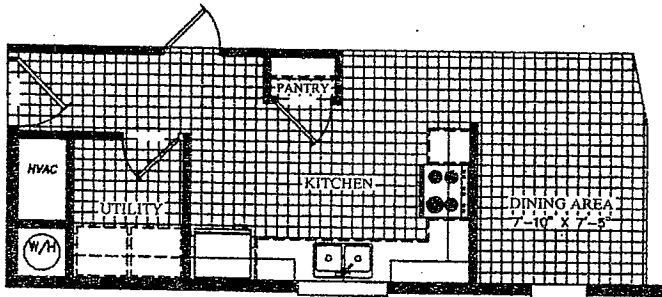
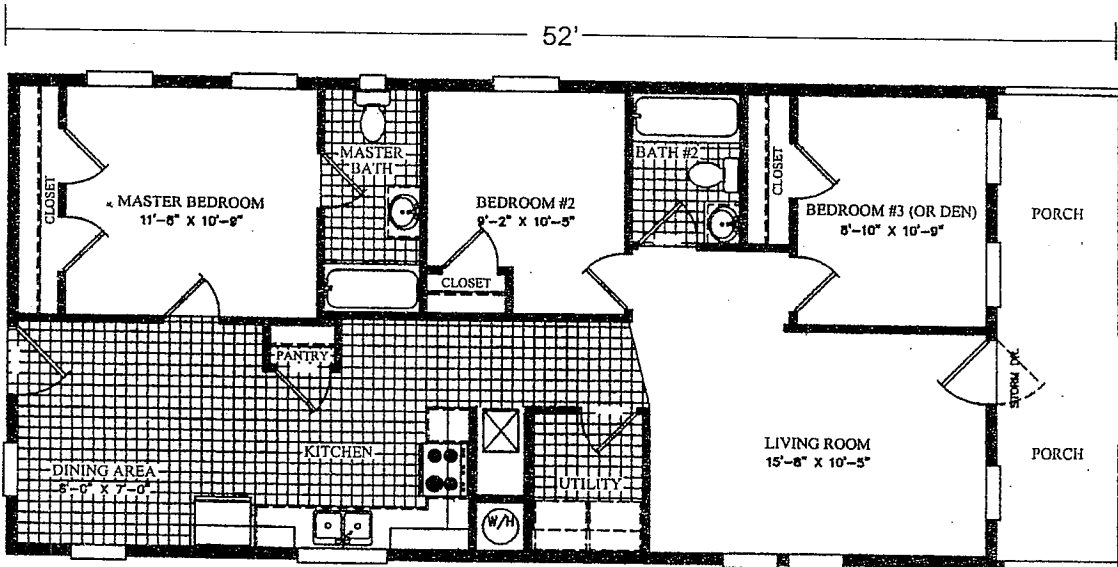
- **54" fiberglass tub/shower
- Ceramic lav with white cabinets
- "Hollywood" vanity light
- Elongated ceramic commode

UTILITY AREA

- Washer/dryer cabinet
- Whole house water cut-off valve & cut off at
commode, sink & lavs
- Plumbed for washer/wired for dryer
- 40 gallon electrical water heater

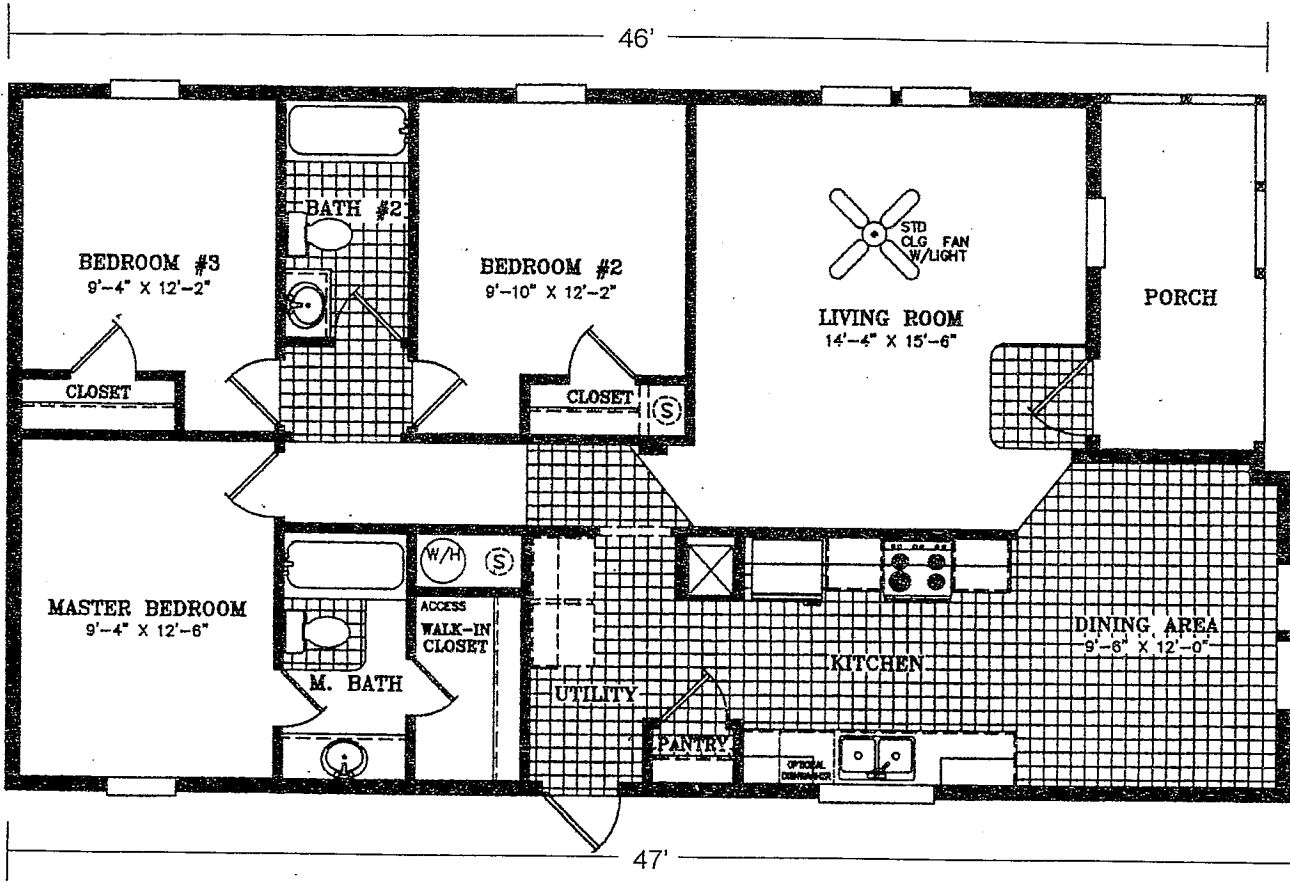
Remember....only ScotBilt Homes have:

<ul style="list-style-type: none">12 day service satisfaction12 month HUD warranty12 year structural warranty

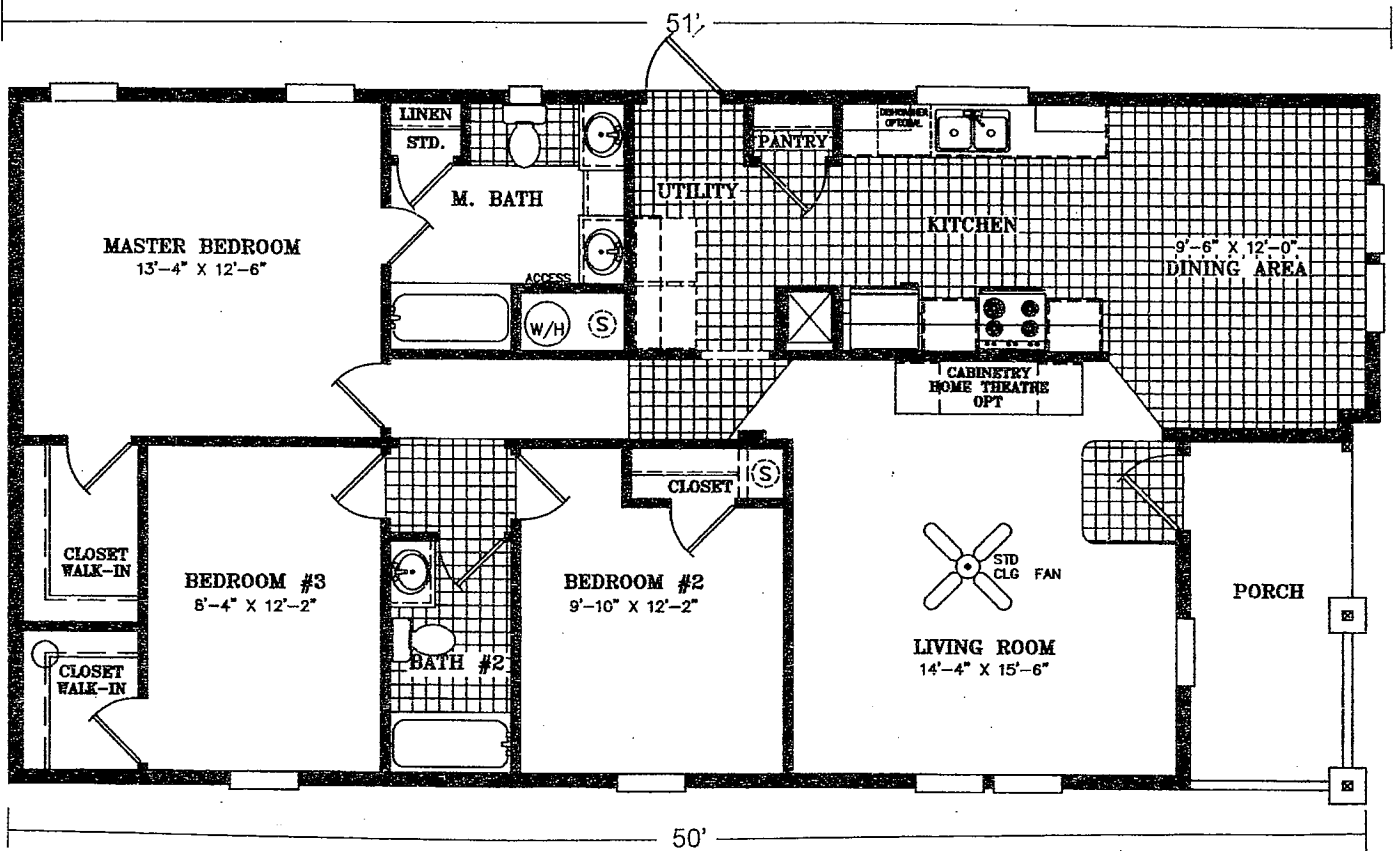


OPTIONAL LAYOUT

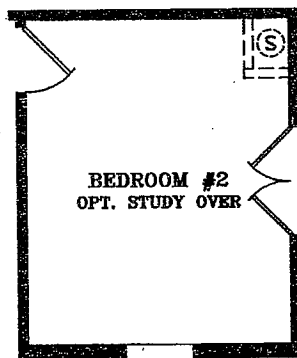
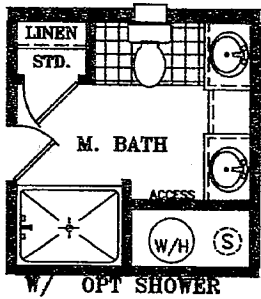
245233-ORL
24 X 56
3 Bedroom, 2 Bathroom

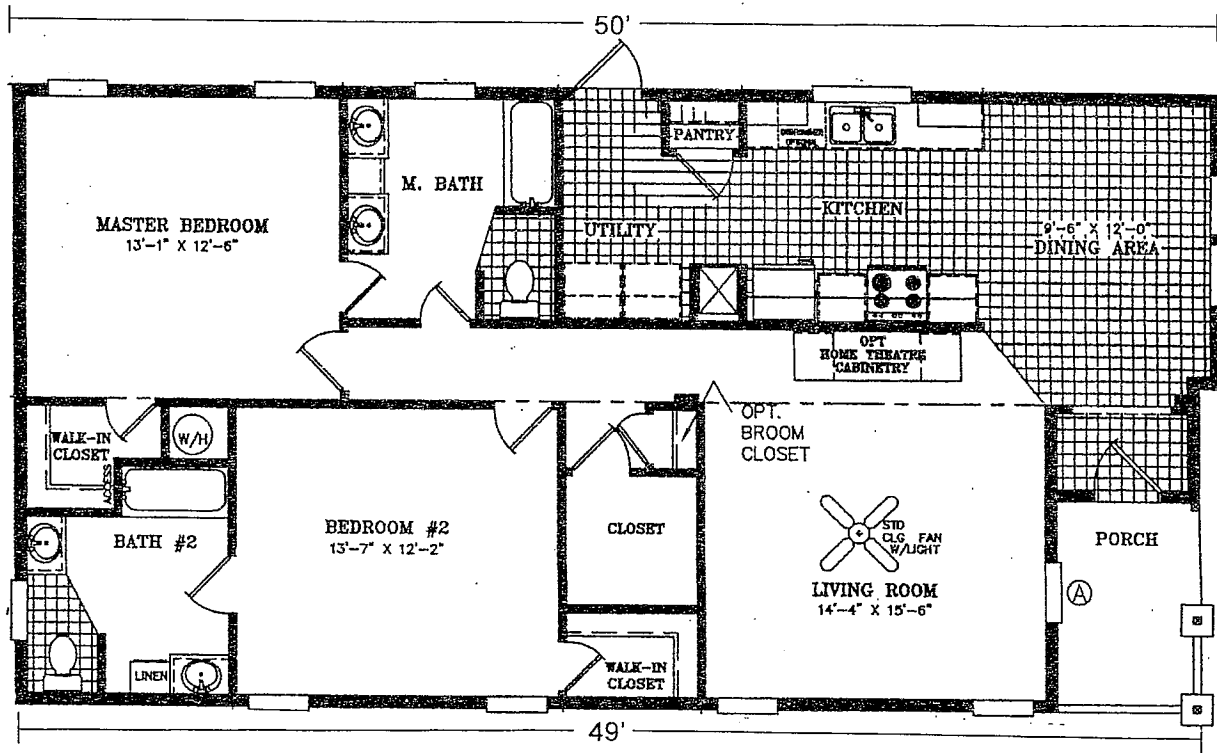


284613-ORL
28 x 50/51
3 Bedroom, 2 Bathroom

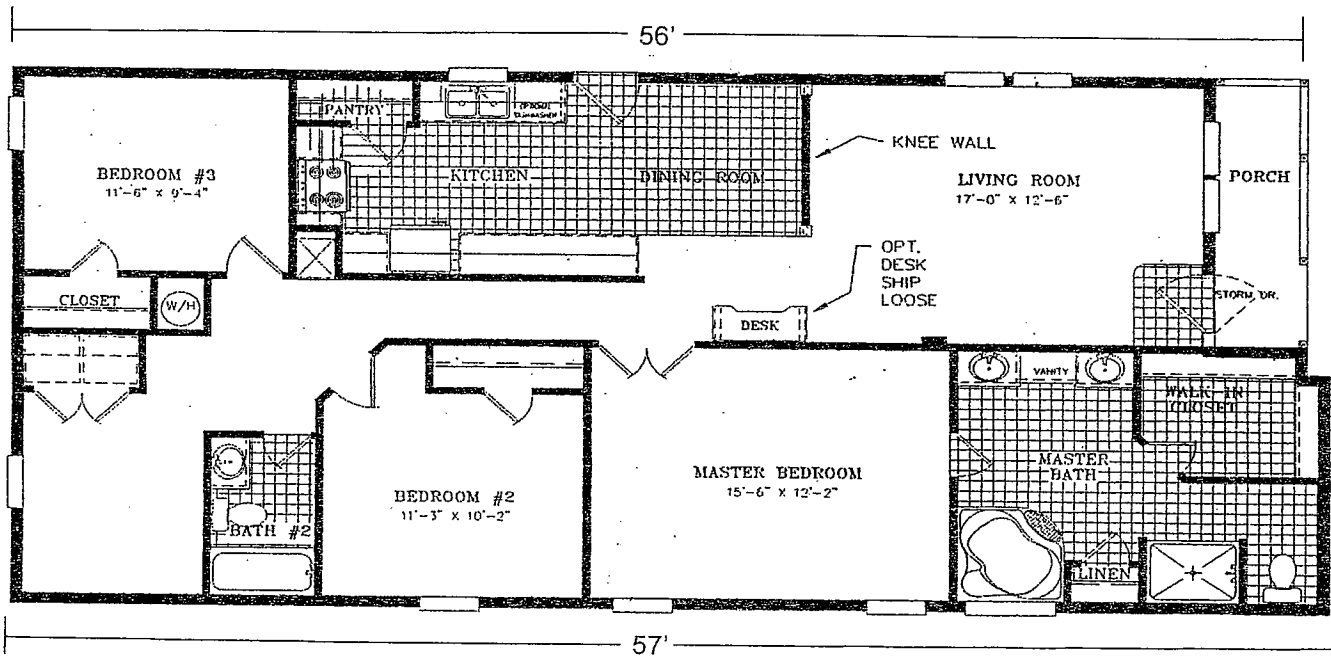


285013-ORL
28 x 54/55
3 Bedroom, 2 Bathroom

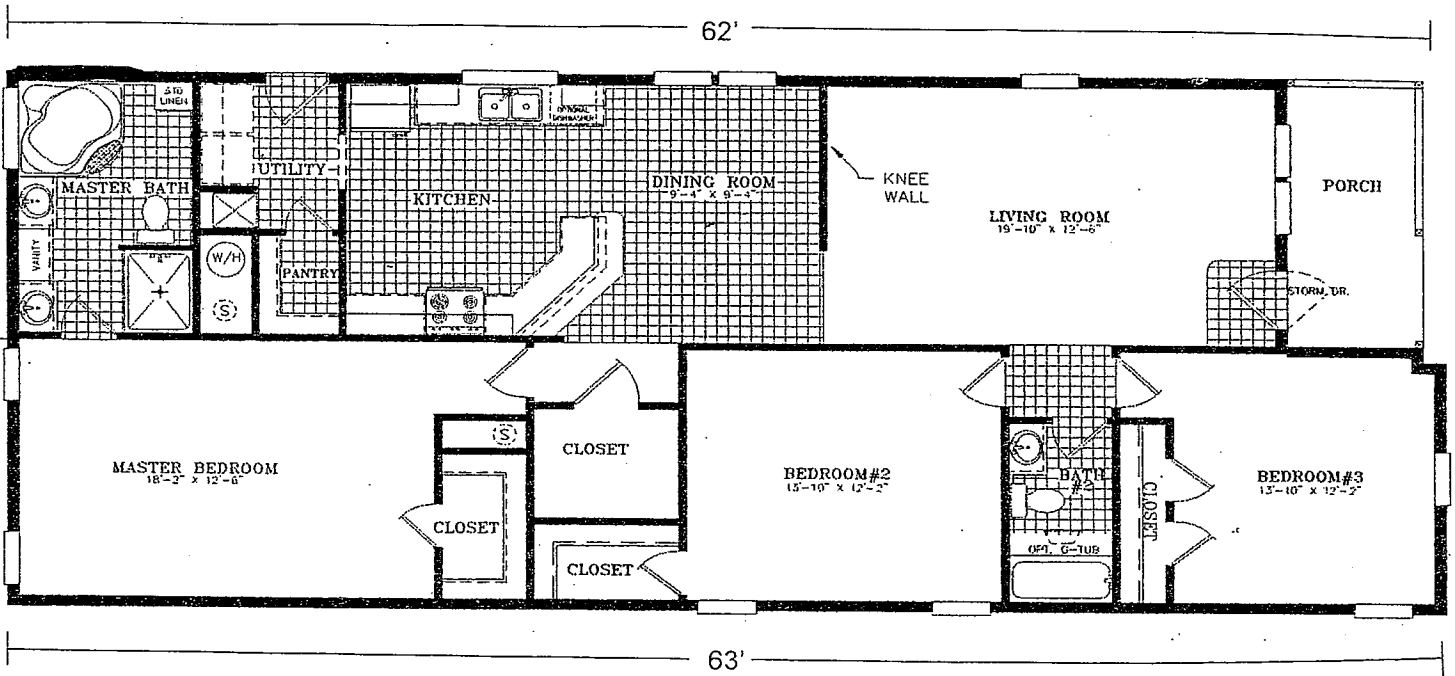




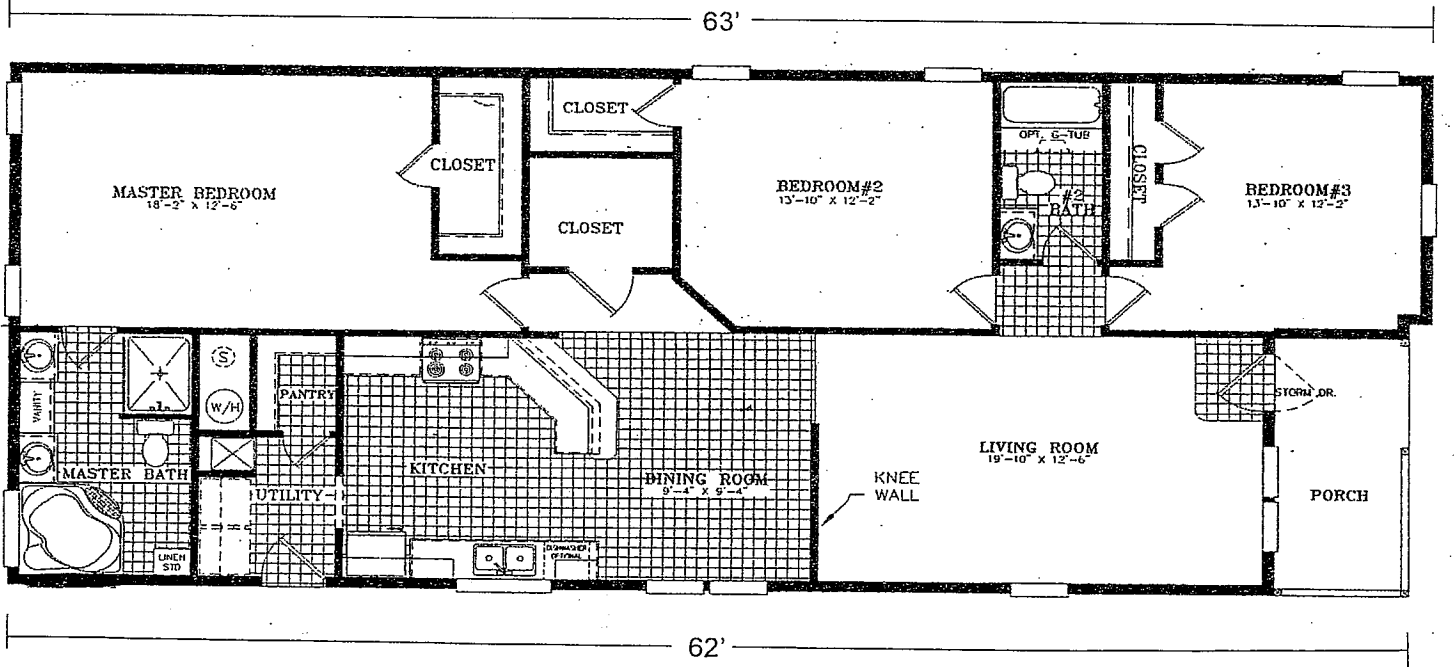
285022-ORL
 28 X 53/54
 3 Bedroom, 2 Bathroom



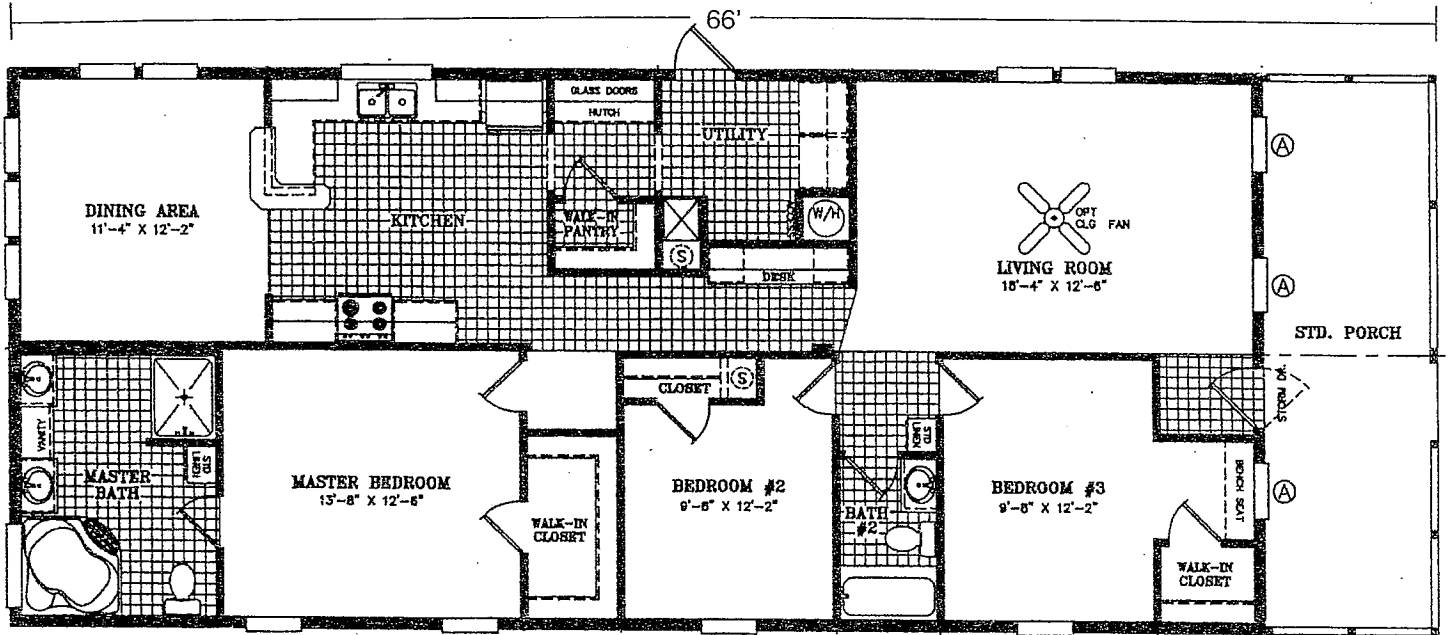
285663-ORL
 28 X 60/61
 3 Bedroom, 2 Bathroom



286213-ORL
 28 X 66/67
 3 Bedroom, 2 Bathroom



286223-ORL
 28 X 66/67
 3 Bedroom, 2 Bathroom



286653-ORL
 28 x 70
 3 Bedroom, 2 Bathroom